



SynchronEyes™ classroom management software

Invest in knowledge

Knowledge is a highly valued commodity in today's workplace, and educating your team is essential for success. But your training room must be as efficient as it is effective. Managing productive training programs can be challenging – people learn at different rates and in different ways. Several of your students may need help at the same time, others may not be concentrating on the material, and you don't have time to evaluate the group's progress. You need a structure that facilitates focused learning.

Make learning efficient

SynchronEyes™ classroom management software helps direct the flow of information in your training room. It connects you with every student, enabling you to see thumbnails of each desktop, and to monitor and control all computer activity. If students become distracted by another application, you can easily redirect their attention to the training material.

Once your group is on track, you can provide anyone who needs help with quick, relevant assistance. Instead of spending valuable time wandering from person to person, you can give each student individualized attention from your desk. When you receive a question on your monitor, you can see exactly what the problem is and respond confidentially, without disturbing the rest of the class.

To ensure your students understand the material, highlight key points on their desktops. If the group is having difficulty with a concept, you can broadcast your own screen and provide an explanation. If the situation calls for a more collaborative solution, allow participants to work together and form chat groups. Everyone gets back on track quickly – on the road to achieving their learning goals.

To be doubly sure that everyone has understood the material, you can create a quiz, then continue instructing while SynchronEyes software marks it.

Fast-track learning

With SynchronEyes classroom management software, your time-management problems are solved, and you are free to instruct. Your team can acquire the knowledge it needs in a training room where information flows smoothly.

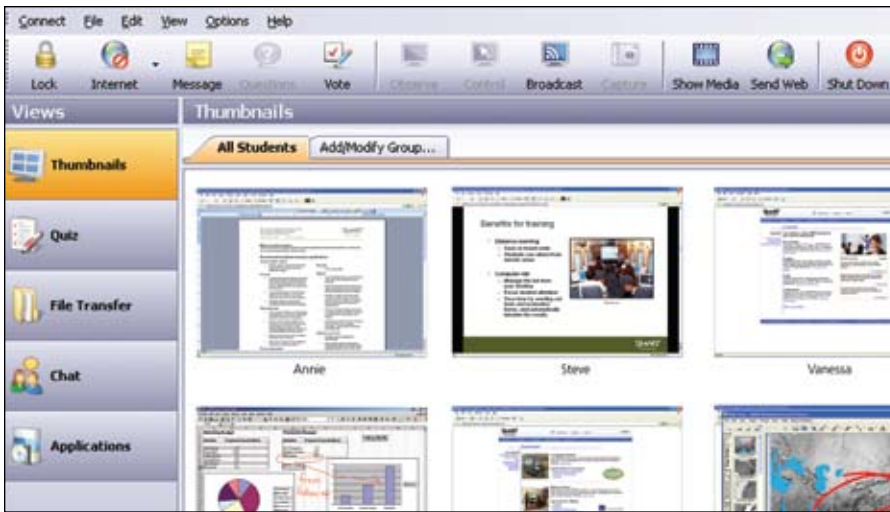
Factsheet

Works with the

SMART Board™
interactive whiteboard

"Aside from the benefits of broadcasting the trainer's screen to all workstations it has been an amazing tool in keeping with industry PCI requirements."

Thomas Reamer, director,
information technology,
International Merchant Services



System requirements

System requirements Windows® operating systems

Instructor station

Pentium® III processor at 500 MHz or equivalent • 128 MB of RAM • Windows 98 SE, 2000, Me, XP, Windows Vista™ or Windows Server® 2003 • 50 MB of free hard disk space • 800 x 600 or higher resolution display with full color • Microsoft® Internet Explorer® 5.0 Internet browser or higher • DirectX 7.0a • 10 Mbps TCP/IP network interface adapter

Student station

Pentium II processor at 300 MHz or equivalent • 64 MB of RAM • Windows 98 SE, 2000, Me, XP, Windows Vista or Windows Server 2003 • 15 MB of free hard disk space • 640 x 480 or higher resolution display with 256 colors • Microsoft Internet Explorer 5.0 Internet browser or higher • DirectX 7.0a • 10 Mbps TCP/IP network interface adapter

Student station (mobile devices)

Windows CE 4.2 or greater, including Windows Mobile® 2003 and 2005 • ARM-based processor • 5 MB free storage space

Increase your power to instruct

- **Monitor all screens** – Observe all students' screens from your desk, including dual monitors.
- **View screen thumbnails** – Students' desktops appear as thumbnail images that you can group, resize and arrange.
- **Arrange thumbnails on screen** – Sort the thumbnails of all desktops to match your training room layout, or put them in any configuration you want.
- **Make class lists** – Automatically connect students, and create class lists that can include any student connected to your network.
- **Add instructors** – Let multiple instructors, aides or administrators monitor students' computer screens in your training room.
- **Connect to mobile devices** – Incorporate devices such as laptops, PDAs and tablet PCs into your training room network.

Create a collaborative training room

- **Broadcast your screen or any student's screen** – Demonstrate a concept or example by sharing your screen or any student's screen with the rest of the group.
- **Use with other SMART products** – Control, monitor and write over computer screens from the SMART Board™ interactive whiteboard, just like you would from your own screen.
- **Show video** – Broadcast multimedia files to any student's screen or to the entire group.
- **Hand over control to a participant** – Choose a student to demonstrate an idea to the rest of the group during your instructor broadcast.
- **Respond to students' questions** – Encourage students to ask you questions using the software so everyone else can concentrate.
- **Create and monitor chat sessions** – Chat with students directly, or create a controlled chat environment between individuals or groups.
- **Take a vote** – Students can vote on a yes-or-no question, and the software will automatically tally the results.

Keep students focused and on schedule

- **Control Web access** – Block Internet access or allow only selected websites to keep students on track.
- **Block applications** – Stop one or more students from accessing any applications you've selected, including specific programs or groups of programs.
- **Launch applications** – Remotely launch and close applications on each student's desktop to structure training time.
- **Control students' computers** – Take or share control of students' computers so you can guide them remotely through a particular task.
- **Lock computers** – Prevent distractions by locking individual computers, selected sets of computers or the entire group.
- **Transfer files** – Send documents to students or collect learning exercises without leaving your computer.
- **Turn all computers off** – Shut down all computers simultaneously with a single mouse click.

Make assessment as easy as 1, 2, 3

- **Quiz students** – Create quizzes, distribute them from your computer and have the software automatically mark responses.
- **Analyze results** – View statistics on individual and group performance.
- **Use any format** – Make quizzes that include any mix of multiple-choice, short-answer, matching, ordering and essay-style questions.
- **Import existing quizzes** – Import data from existing text files.
- **Incorporate symbols and rich text** – Include mathematical symbols and rich-text formatting in your quizzes.

Install software quickly and securely

- **Make installation simple** – Deploy the software automatically to all computers using an .msi file.
- **Keep your training room secure** – Provide a safe learning environment using 256-bit encryption.
- **Prevent outside access to training room files** – Ensure that your students' work is protected through teacher authentication.

Authorized SMART reseller

Contact SMART Technologies

Toll Free 1.888.42.SMART (U.S./Canada)
or +1.403.245.0333

For a free 30-day evaluation, visit smarttech.com/synchroneyes